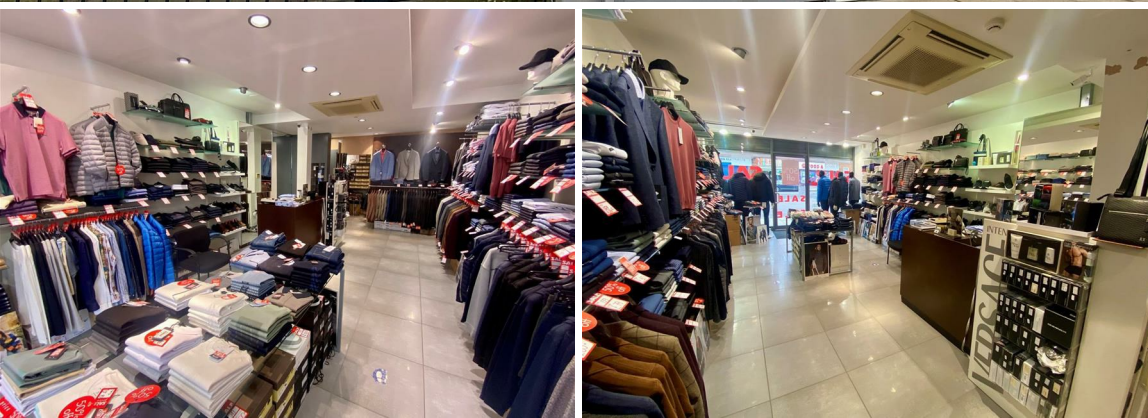




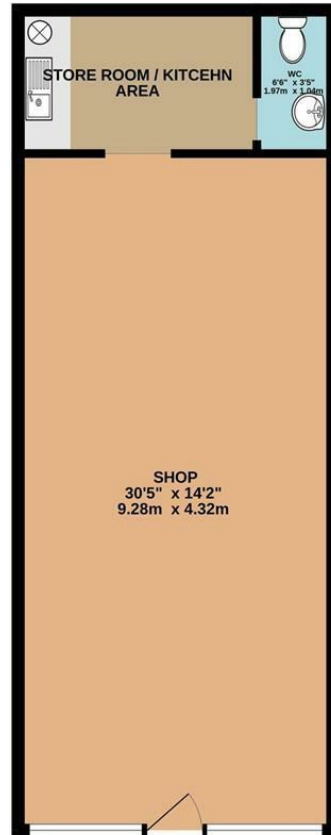
**0 Bed  
Commercial  
located in Potters  
Bar**

**£20,000 Per Annum**



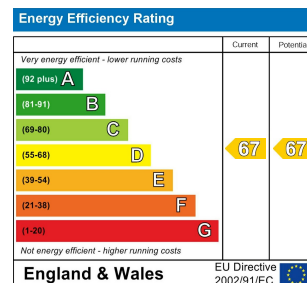
**Duncan Perry**  
SALES ■ LETTINGS ■ COMMERCIAL

GROUND FLOOR  
523 sq.ft. (48.6 sq.m.) approx.



TOTAL FLOOR AREA : 523 sq.ft. (48.6 sq.m.) approx.

Whilst every attempt has been made to ensure the accuracy of the floorplan contained here, measurements of doors, windows, rooms and any other items are approximate and no responsibility is taken for any error, omission or mis-statement. This plan is for illustrative purposes only and should be used as such by any prospective purchaser. The services, systems and appliances shown have not been tested and no guarantee as to their operability or efficiency can be given.  
Made with Metropix ©2024



## DIRECTIONS

## CONTACT

79 Bradmore Green  
Brookmans Park  
Herts.  
AL9 7QT

E:  
T: 01707664549  
[www.duncanperry.co.uk](http://www.duncanperry.co.uk)

**Duncan Perry**  
SALES ■ LETTINGS ■ COMMERCIAL